

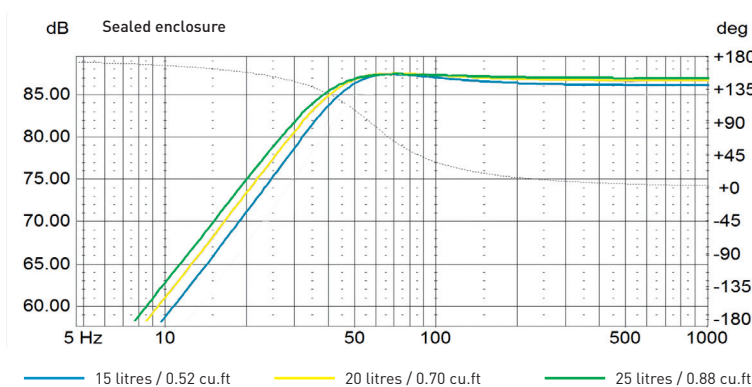
ACCESS 25A4

10" (25cm) subwoofer

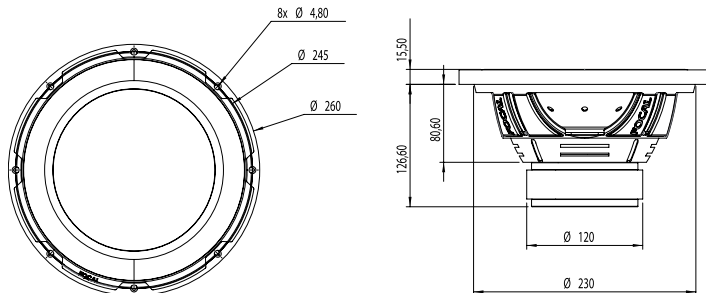


- DFS® Cone
- Sealed or ported enclosure

FREQUENCY RESPONSE/IMPEDANCE



MECHANICAL DRAWING



SPECIFICATIONS

Nominal power	200W RMS	
Maximum power	400W	
Sensitivity (2,83V/1m)	85.45dB	
Cone	DFS® (Dual Fiberglass Structure)	
Surround	Butyl	
Nom. impedance	4 Ohms	
DC resistance	4.2 Ohms	
VC diameter	50mm	2"
VC height	25mm	1"
Former	Kapton	
Layers	4	
Wire	Copper	
Inductance	2.85mH	
Xmax	± 8.5mm	0 ⁵ / ₁₆ "
Magnet d x h	120mm x 30mm	4 ²³ / ₃₂ " x 1 ³ / ₁₆ "
Magnet weight	1250g	2.75 lbs
Flux density	0.8T	
Gap height	8mm	0 ⁵ / ₁₆ "
Net weight	3.5kg	7.7 lbs

PARAMETERS

Fs	23.5Hz
Vas	49.85 liters
Qts	0.506
Qes	0.562
Qms	5.059
Re	4.19 Ohms
Sd	330.06cm ²
Cas	3.55E-07 m ⁵ /N
Mas	129.23kg/m ⁴
Ras	3771.9 Ohms.ac
Cms	3.26E-04 m/N
Mms	140.79g
Rms	4.109Kg/s
Ces	908.39mF
Les	50.49mH
Res	37.72 Ohms
BI	12.45N/A
SPL	82.45 dB/W/m

SUGGESTED APPLICATION

Load	Volume	F-3 (Hz)
Sealed	15l-0.52cu.ft	38Hz
Sealed	20l-0.70cu.ft	35Hz
Sealed	25l-0.88cu.ft	35Hz

Load	Volume	Port Ø	Port length	F-3 (Hz)
Ported	20l-0.70cu.ft	9 cm-3 ¹ / ₂ "	35 cm-13 ³ / ₄ "	38Hz
Ported	30l-1.05cu.ft	9 cm-3 ¹ / ₂ "	35 cm-13 ³ / ₄ "	32Hz
Ported	35l-1.23cu.ft	9 cm-3 ¹ / ₂ "	35 cm-13 ³ / ₄ "	31Hz

