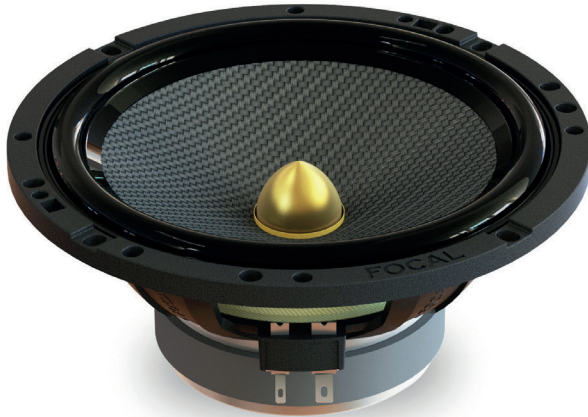


# ACCESS 165 YE

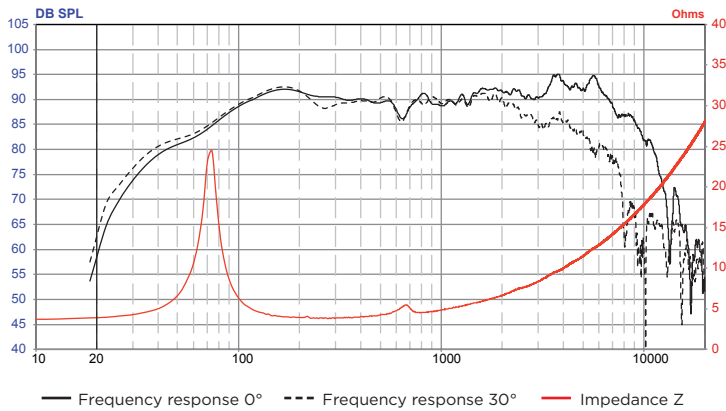
Technical Sheet

## Woofer (6<sup>1/2</sup>" )

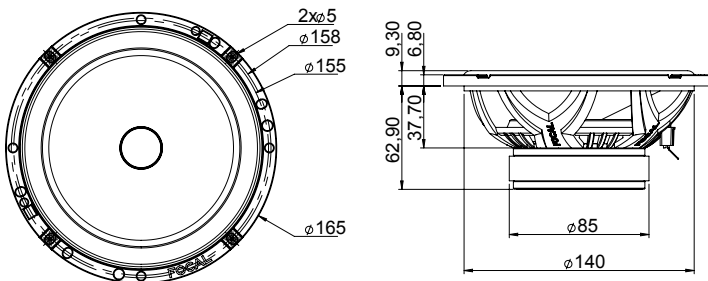


- Cone DFS\*
- ABS basket

## FREQUENCY RESPONSE/IMPEDANCE



## MECHANICAL DRAWING



**Performance**  
CREATE YOUR SOUND

## SPECIFICATIONS

<b>Nominal power</b>	70W RMS	
<b>Maximum power</b>	140W	
<b>Sensitivity (2,83V/1m)</b>	91dB	
<b>Cone</b>	Glass fiber	
<b>Surround</b>	Butyl	
<b>Nom. impedance</b>	4 Ohms	
<b>DC resistance</b>	3.5 Ohms	
<b>VC diameter</b>	25mm	1"
<b>VC height</b>	10mm	0 <sup>3/8</sup> "
<b>Former</b>	Kapton	
<b>Layers</b>	2	
<b>Wire</b>	Copper	
<b>Inductance</b>	-	
<b>Xmax</b>	± 2.5mm	0 <sup>1/8</sup> "
<b>Magnet d x h</b>	85mm x 15mm	3 <sup>1/3</sup> x 0 <sup>9/16</sup> "
<b>Magnet weight</b>	380g	0.76 lbs
<b>Flux density</b>	1T	
<b>Gap height</b>	5mm	0 <sup>3/16</sup> "
<b>Net weight</b>	0.85kg	1.70 lbs

## PARAMETERS

<b>Fs</b>	73.8Hz
<b>Vas</b>	8.9 liters
<b>Qts</b>	0.905
<b>Qes</b>	1.03
<b>Qms</b>	7.43
<b>Re</b>	3.54 Ohms
<b>Sd</b>	136.85cm <sup>2</sup>
<b>Cas</b>	6,32E-08 m5/N
<b>Mas</b>	73,37 Kg/m4
<b>Ras</b>	4578,87 Ohms.ac
<b>Cms</b>	3380µm/N
<b>Mms</b>	13.74g
<b>Rms</b>	0.858kg/s
<b>Ces</b>	627.48mF
<b>Les</b>	7.48mH
<b>Res</b>	25.54 Ohms
<b>Bl</b>	4.68N/A
<b>SPL</b>	87.25 dB/W/m

**FOCAL**  
LISTEN BEYOND