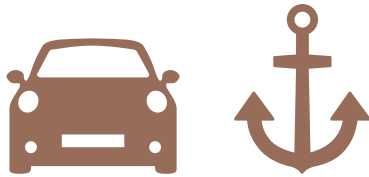


MOTORITIES COLLECTION

2023



FROM CAR
TO BOAT

For four decades, Focal has been creating unique sounding high-end speaker drivers and acoustic loudspeakers. The brand's values are innovation and performance, excellence and pleasure. We are renowned the world over for our exclusive technologies. The result of this technological heritage is sound reproduction imbued with clarity, power and a natural quality, presenting you with the best products in their category. With our Motorities Collection, we invite you to combine the pleasure of driving and sailing with the pleasure of pure sound. All aboard for some exceptional listening experiences.

01.
UTOPIA M

7



02.
K2 POWER M

13

03.
K2 POWER

21



04.
FLAX EVO

27

05.
SLATEFIBER

35



06.
POLYGLASS

41



07.

ACCESS

47

08.

UNIVERSAL

55



09.

AUDITOR

63



10.

SUBWOOFERS

71



11.

AMPLIFIERS &
ACCESSORIES

77



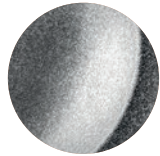
01.

UTOPIA M

Simply excellent

The quintessence of Focal expertise and cutting-edge technology, the Utopia M product line takes sound excellence to a whole new level. The specially designed chassis is a subtle mix of tradition, performance and elegance in true French style. By choosing each speaker driver in the range based on your vehicle and your needs, you can build your own audio system for a fully bespoke set-up.





'M'-shaped
'W' sandwich cone



Designer
bowl



TMD®
surround



Neodymium
magnet



'M'-shaped Beryllium
tweeter



Elegant,
designed grille





TBM

3.5WM

6 WM

8 WM

Type	Tweeter	Midrange	Woofer	Woofer
Diameter	-	3½" (87.5mm)	6½" (165mm)	8" (200mm)
Cone	'M'-shaped pure Beryllium dome	'M'-profile 'W'	'M'-profile 'W'	'M'-profile 'W'
Surround technology	Tuned Mass Damper (TMD®)	Tuned Mass Damper (TMD®)	Tuned Mass Damper (TMD®)	Tuned Mass Damper (TMD®)
Motor	Neodymium	Neodymium	Neodymium	Neodymium
Mounting depth	5/16" (9mm)	1¼" (31mm)	2" (51.5mm)	2¼" (52mm)
Voice coil diameter	1" (25m)	1¾" (45mm)	3⅛" (80mm)	3⅛" (80mm)
Impedance	4Ω	4Ω	4Ω	4Ω
Max. power	200W	100W	200W	200W
Nom. power	20W RMS	50W RMS	100W RMS	100W RMS
Sensitivity (2.83 V/1 m)	95dB	88dB	91.5dB	91.8dB
Frequency response	1,5kHz - 50kHz	200Hz - 10kHz	60Hz - 6kHz	45Hz - 5kHz
Suggested load volume	-	-	-	-
Accessories	Supplied mounting brackets	Optional grille	Optional grille	Optional grille



10WM

Subwoofer
10" (250mm)
'M'-profile 'W'
-
Neodymium
4¼" (108mm)
Dual voice coil 4¾" (120mm)
2 x 4Ω
800W
400W RMS
87.5dB
25Hz - 800Hz
Sealed enclosure: 0.35 to 0.52 cu ft
-



UTOPIA PASSIVE 165 W-XP

Type	2-way component kit
Diameter	6½" (165mm)
Cone	Composite 'W' sandwich
Surround technology	Tuned Mass Damper (TMD®)
Motor	Ferrite
Mounting depth	2¼" (74mm)
Voice coil diameter	1¼" (32mm)
Tweeter	Pure Beryllium inverted dome
Crossover	Separated: 12/18dB bi-amp
Adjustable tweeter level	+3; 0; -3dB/oct
Impedance	2Ω
Max. power	200W
Nom. power	100W RMS
Sensitivity (2.83 V/1 m)	93dB
Frequency response	60Hz - 40kHz
Accessories	Grilles included



3.5" GRILLE

Optional 'M' profile aluminium ring



6" GRILLE

Optional 'M' profile aluminium ring



8" GRILLE

Optional 'M' profile aluminium ring

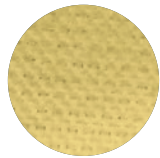
02.

K2 POWER M

Power and precision in style

Iconic K2 cone, 'M' profile, TMD® surround, etc.: Focal has combined several of its finest technologies to create K2 Power M. These speaker drivers are characterised by power, precision and compact design, offering unparalleled musicality and pure high-fidelity in-car sound. The brand-new FRAK tweeter brings unprecedented dynamics to your installation; it combines perfectly with the other products from the range for a unique sonic experience and 'à la carte' installation.

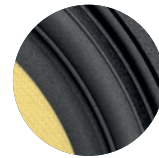




'M'-profile
K2 cone



Aluminium
frame



TMD®
surround



Neodymium
magnet



FRAK
Tweeter



'M'
grille





FRAK

3 KM

6.5 KM

Type	Tweeter	Medium	Woofer
Diameter	1¼" (32mm)	3" (80mm)	6½" (165mm)
Cone	'M'-shaped Aluminium-Magnesium	K2 sandwich 'M'-profile	K2 sandwich 'M'-profile
Surround technology	Tuned Mass Damper (TMD®)	Tuned Mass Damper (TMD®)	Tuned Mass Damper (TMD®)
Motor	Neodymium	Neodymium	Ferrite
Mounting depth	¾" (19.5mm)	1⅛" (27.3mm)	2⅛" (54mm)
Voice coil diameter	1" (25mm)	1⅜" (35mm)	2⅜" (60mm)
Impedance	4Ω	4Ω	4Ω
Max. power	150W	120W	240W
Nom. power	25W RMS	60W RMS	120W RMS
Sensitivity (2.83 V/1 m)	91dB	89dB	92.5dB
Frequency response	600Hz - 32kHz	200Hz - 9kHz	50Hz - 5kHz
Suggested load volume	-	-	-
Accessories	Mounting accessories and grilles included	Optional grille	Optional grille



SUB 5 KM

Subwoofer

5" (145mm)

K2 sandwich 'M'-profile

Catenary profile

Ferrite

2³/₈" (69mm)

2³/₈" (60mm)

4Ω

400W

200W RMS

86dB

35Hz - 250Hz

4l / 41Hz (sealed)

6l / 39Hz (sealed)

Optional grille



3" GRILLE

Optional
'M' profile
aluminium ring



5" GRILLE

Optional
'M' profile
aluminium ring



6.5" GRILLE

Optional
'M' profile
aluminium ring

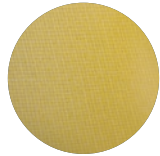
03.

K2 POWER

More than just a product, a way of life

Immerse yourself in the performance of the iconic yellow aramid fibre cone, an exclusive Focal icon of sportiness and power. Instantly recognisable, the K2 Power line delivers incredible harmonics and dynamics. Meanwhile, the subwoofers have been designed to function in very small spaces whilst providing high volume and impressive energy. Get ready to experience new emotions behind the wheel.





K2
cone



Aluminium
chassis



TMD[®]
surround



Ventilated
magnet



K2 tweeter with
'M'-shaped dome



Audiophile
crossover





EC 165 K



ES 100 K



ES 130 K

Type	2-way coaxial kit	2-way component kit	2-way component kit
Diameter	6½" (165mm)	4" (100mm)	5" (130mm)
Cone	K2 composite sandwich	K2 composite sandwich	K2 composite sandwich
Surround technology	Tuned Mass Damper (TMD®)	Tuned Mass Damper (TMD®)	Tuned Mass Damper (TMD®)
Motor	Ferrite	Neodymium	Ferrite
Mounting depth	2½" (74mm)	1¼" (39mm)	2¾" (60.4mm)
Voice coil diameter	1" (25mm)	¾" (20mm)	1" (25mm)
Tweeter	TKM ('M' profile aramid-fibre inverted dome)	TKM ('M' profile aramid-fibre inverted dome)	TKM ('M' profile aramid-fibre inverted dome)
Crossover	6dB	Separated: 12/12dB/oct	Separated: 6-12/12dB/oct
Adjustable tweeter level	-	+3; 0; -3dB/oct	+3; 0; -3dB/oct
Impedance	4Ω	4Ω	4Ω
Max. power	160W	120W	160W
Nom. power	80W RMS	60W RMS	80W RMS
Sensitivity (2.83 V/1 m)	93dB	90dB	90dB
Frequency response	60Hz - 22kHz	110Hz - 22kHz	65Hz - 22kHz
Suggested load volume	-	-	-
Accessories	Grilles included	Grilles included	Grilles included



ES 165 K

2-way component kit

6½" (165mm)

K2 composite sandwich

Tuned Mass Damper (TMD®)

Ferrite

2¹⁵/₁₆" (74mm)

1¼" (32mm)

TKM ('M' profile aramid-fibre inverted dome)

Separated: 6-12/12dB/oct

+3; 0; -3dB/oct

4Ω

200W

100W RMS

90.8dB

60Hz - 22kHz

-

Grilles included

ES 165 K2

2-way component kit

6½" (165mm)

K2 composite sandwich

Tuned Mass Damper (TMD®)

Ferrite

2¹⁵/₁₆" (73.9mm)

1¼" (32mm)

TKM ('M' profile aramid-fibre inverted dome)

Bi-amp separated: 6-12/12dB/oct

+3; 0; -3dB/oct

2Ω

200W

100W RMS

92.8dB

60Hz - 22kHz

-

Grilles included



ES 165 KX2



ES 165 KX3

Type	2-way component kit	3-way component kit
Diameter	6½" (165mm)	Woofer: 6½" (165mm) Midrange: 80mm
Cone	K2 composite sandwich	K2 composite sandwich
Surround technology	Tuned Mass Damper (TMD®)	Tuned Mass Damper (TMD®)
Motor	Ferrite	Woofer: Ferrite Midrange: Neodymium
Mounting depth	3" (75.9mm)	Woofer: 3" (75.9mm) Midrange: 15/16" (33.5mm)
Voice coil diameter	1¼" (40mm)	1¼" (40mm)
Tweeter	TKMX ('M' profile aramid-fibre inverted dome)	TKMX ('M' profile aramid-fibre inverted dome)
Crossover	Bi-amp separated: 6-12/12-18dB/oct	Separated: 6-12/12/12dB/oct
Adjustable tweeter level	+3; 0; -3dB/oct	+3; 0; -3dB/oct
Impedance	2Ω	4Ω
Max. power	240W	240W
Nom. power	120W RMS	120W RMS
Sensitivity (2.83 V/1 m)	92,5dB	93dB
Frequency response	55Hz - 22kHz	45Hz - 22kHz
Suggested load volume	-	-
Accessories	Grilles included	Grilles included



E25 KX

Subwoofer

10" (250mm)

K2 composite sandwich

-

Dual ferrite

6¾" (172mm)

2⅝" (65mm)

-

-

-

2 x 4Ω

1,200W

600W RMS

84.5dB

25Hz - 500Hz

Sealed enclosure: 0.6 to 0.77 cu ft
Bass-reflex: 0.77 to 1.23 cu ft

-



E30 KX

Subwoofer

12" (300mm)

K2 composite sandwich

-

Dual ferrite

6¾" (172mm)

2⅝" (65mm)

-

-

-

2 x 4Ω

1,600W

800W RMS

86.5dB

25Hz - 500Hz

Sealed enclosure: 0.99 to 1.23 cu ft
Bass-reflex: 0.99 to 1.76 cu ft

-

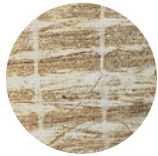
04.

FLAX EVO

The perfect balance

With its French flax cone - a patented Focal exclusive - Flax Evo embodies the search for acoustic quality combined with sleek aesthetics. Sound definition, a natural midrange and deep bass are what characterise this unique range. The speaker drivers can handle high-performance amplification and can be therefore combined with any product from the Focal electronics range to provide you with a pure listening experience whilst on the go.





Flax
cone



Aluminium
chassis



TMD®
surround



Ferrite
magnet



TAM®
tweeter



Audiophile
crossover





PC 165 FE



PS 130 FE



PS 165 FE

Type	2-way coaxial kit	2-way component kit	2-way component kit
Diameter	6½" (165mm)	5" (130mm)	6½" (165mm)
Cone	Flax sandwich	Flax sandwich	Flax sandwich
Surround technology	Tuned Mass Damper (TMD®)	Tuned Mass Damper (TMD®)	Tuned Mass Damper (TMD®)
Motor	Ferrite	Ferrite	Ferrite
Mounting depth	2⅞" (72.7mm)	2⅜" (59.7mm)	2⅞" (72.7mm)
Voice coil diameter	1" (25mm)	1" (25mm)	1" (25mm)
Tweeter	Coaxial 'M'-profile inverted dome	TAM ('M'-profile Al/Mg inverted dome)	TAM ('M'-profile Al/Mg inverted dome)
Crossover	Integrated: 6dB/oct	Separated: 12/12dB/oct	Separated: 12/12dB/oct
Adjustable tweeter level	0/-3dB	0/-3dB	0/-3dB
Impedance	4Ω	4Ω	4Ω
Max. power	140W	120W	140W
Nom. power	70W RMS	60W RMS	70W RMS
Sensitivity (2.83 V/1 m)	90dB	90.5dB	91.5dB
Frequency response	60Hz - 28kHz	75Hz - 28kHz	60Hz - 28kHz
Accessories	Mounting accessories, screws	Mounting accessories, screws	Mounting accessories, screws



PS 165 FSE

2-way component kit

6½" (165mm)

Flax sandwich

Tuned Mass Damper (TMD®)

Ferrite

2½" (54.5mm)

1¼" (32mm)

TAM ('M'-profile Al/Mg inverted dome)

Separated:
12/12dB/oct

0/-3dB

4Ω

120W

60W RMS

91.5dB

70Hz - 28kHz

Mounting accessories,
screws

PS 165 FXE

2-way component kit

6½" (165mm)

Flax sandwich

Tuned Mass Damper (TMD®)

Ferrite

3" (77mm)

1¼" (32mm)

TAM ('M'-profile Al/Mg inverted dome)

Bi-amp separated:
12-18dB/oct

0/-3dB

4Ω

160W

80W RMS

90.5dB

55Hz - 28kHz

Mounting accessories,
screws

PS 165 F3E

3-way component kit

Woofer: 6½" (165mm)

Midrange: 3¼" (80mm)

Flax sandwich

Tuned Mass Damper (TMD®)

Ferrite

Woofer: 2⅞" (72.7mm)

Midrange: 1⅝" (33.5mm)

Woofer: 1¼" (32mm)

Midrange: 1" (25mm)

TAM ('M'-profile Al/Mg inverted dome)

Separated:
12/12-18dB/oct

0/-3dB

4Ω

160W

80W RMS

90.5dB

60Hz - 28kHz

Mounting accessories,
screws



P 20 FE



P 20 FSE

Type	Sealed box and bass-reflex subwoofer	Sealed box subwoofer
Diameter	8" (200mm)	8" (200mm)
Cone	Flax sandwich	Flax sandwich
Motor	Dual ferrite	Dual ferrite
Surround technology	4 $\frac{5}{8}$ " (117mm)	3" (76mm)
Voice coil diameter	1 $\frac{1}{2}$ " (38mm)	1 $\frac{1}{2}$ " (38mm)
Impedance	4 Ω	4 Ω
Max. power	500W	400W
Nom. power	250W RMS	200W RMS
Sensitivity (2.83 V/1 m)	82.5dB	86dB
Frequency response	39Hz - 500Hz	41Hz - 400Hz
Suggested load volume	Sealed enclosure: 0.35 to 0.52 cu ft Bass-reflex: 0.35 to 0.71 cu ft	Sealed enclosure: 0.21 to 0.32 cu ft



P 25 FE

Sealed box and
bass-reflex subwoofer

10" (250mm)

Flax sandwich

Dual ferrite

5⁹/₁₆" (140.6mm)

2" (50mm)

4Ω

600W

300W RMS

85dB

33Hz - 500Hz

Sealed enclosure: 0.35 to 0.88 cu ft
Bass-reflex: 0.88 to 1.23 cu ft



P 25 FSE

Sealed box subwoofer

10" (250mm)

Flax sandwich

Dual ferrite

3" (76mm)

1¹/₂" (38mm)

4Ω

560W

280W RMS

86dB

41Hz - 400Hz

Sealed enclosure:
0.42 to 0.64 cu ft (12 to 18 l)

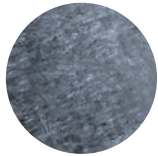
05.

SLATEFIBER

Performance personified

Versatile, accessible and high-performance, the Slatefiber line turns heads for its uncompromising efficiency. The two products are high sensitivity, so can be connected to the vehicle's original system or to an amplifier. What's more, you get meticulous French manufacturing, an exclusive Slatefiber cone, sleek design, flexible installation options and standard kit sizes to fit a wide range of vehicles.





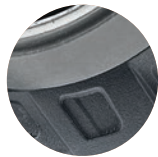
Slatefiber
cone



Rotor effect
basket



French
manufacturing



Ferrite
magnet



Aluminium
tweeter



Separable
crossovers





PC 165 SF



PS 165 SF

Type	2-way coaxial kit	2-way component kit
Diameter	6½" (165mm)	6½" (165mm)
Cone	Slatefiber	Slatefiber
Surround technology	Butyl	Butyl
Motor	Ferrite	Ferrite
Mounting depth	2¾" (70mm)	2¾" (70mm)
Voice coil diameter	1" (25mm)	1" (25mm)
Tweeter	Aluminium/Magnesium inverted dome	Aluminium/Magnesium inverted dome
Crossover	Integrated	Separable crossover: 12dB/oct
Adjustable tweeter level	-	+3/0/-3dB
Impedance	4Ω	4Ω
Max. power	160W	160W
Nom. power	80W RMS	80W RMS
Sensitivity (2.83V/1m)	91dB	91dB
Frequency response	60Hz - 21kHz	60Hz - 21kHz
Accessories	Mounting accessories, screws	Mounting accessories, screws



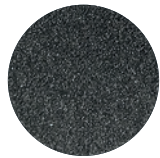
06.

POLYGLASS

A winning combination

Forget your current system and treat yourself to a rejuvenated sound experience with our Polyglass and Polyglass Last Edition kits that combine power, durability and compactness. This line has never stopped improving across the board, from concept to design. The subwoofers, which can be used in a sealed or bass-reflex box, make a real difference with their impactful bass. All components of the line are meticulously put together to surround passengers with warm sound.

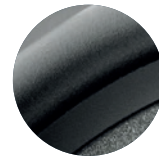




Polyglass
cone



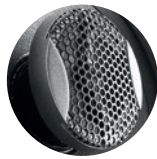
Aluminium
chassis



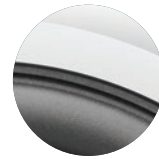
Butyl
surround



Separable
crossovers



Aluminium
tweeter



Diamond
cutting





	PC 100	PC 130	PC 165
Type	2-way coaxial kit	2-way coaxial kit	2-way coaxial kit
Diameter	4" (100mm)	5" (130mm)	6½" (165mm)
Cone	Polyglass	Polyglass	Polyglass
Motor	Ferrite	Ferrite	Ferrite
Mounting depth	2" (51.5mm)	2¼" (56.5mm)	2⅝" (65.5mm)
Voice coil diameter	1" (25mm)	1" (25mm)	1" (25mm)
Tweeter	Rotating Aluminium inverted dome	Rotating Aluminium inverted dome	Rotating Aluminium inverted dome
Crossover	Integrated: 6dB/oct	Integrated: 6dB/oct	Integrated: 6dB/oct
Adjustable tweeter level	-	-	-
Impedance	4Ω	4Ω	4Ω
Max. power	100W	120W	160W
Nom. power	50W RMS	60W RMS	80W RMS
Sensitivity (2.83 V/1 m)	90.9dB	91.6dB	93.6dB
Frequency response	100Hz - 20kHz	80Hz - 20kHz	60Hz - 20kHz
Suggested load volume	-	-	-
Accessories	Grilles included	Grilles included	Grilles included



PS 165 V1

2-way component kit

6½" (165mm)

Polyglass

Ferrite

2¾" (65.5mm)

1" (25mm)

Aluminium
inverted dome

Separated: 6/12dB/oct

+3/0/-3dB

4Ω

160W

80W RMS

92,5dB

60Hz - 20kHz

-

Grilles included

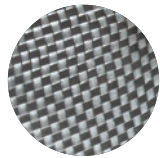
07.

ACCESS

Accessible Focal technology

Access invites all drivers to experience Focal innovation and quality. With its assured style and technical prowess, this line is dedicated to performance. Power handling, plunging depth of bass and razor sharp acoustics are the common denominators of the Access philosophy: we guarantee you the full Focal technology experience inside your car and a rejuvenated listening adventure.

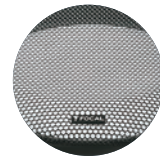




DFS®
cone



Reinforced ABS
bowl



Curved
grilles



Adjustable
tweeter level



Aluminium dome
tweeter



Butyl
surround





100 AC

130 AC

165 AC

	100 AC	130 AC	165 AC
Type	2-way coaxial kit	2-way coaxial kit	2-way coaxial kit
Diameter	4" (100mm)	5" (130mm)	6½" (165mm)
Cone	DFS® (Dual Fiberglass Structure)	DFS® (Dual Fiberglass Structure)	DFS® (Dual Fiberglass Structure)
Motor	Ferrite	Ferrite	Ferrite
Mounting depth	2¼" (52.2mm)	2½" (54.7mm)	2½" (62.9mm)
Voice coil diameter	1" (25mm)	1" (25mm)	1" (25mm)
Tweeter	Rotating Aluminium inverted dome	Rotating Aluminium inverted dome	Rotating Aluminium inverted dome
Crossover	Integrated: 6dB/oct	Integrated: 6dB/oct	Integrated: 6dB/oct
Impedance	4Ω	4Ω	4Ω
Max. power	80W	100W	120W
Nom. power	40W RMS	50W RMS	60W RMS
Sensitivity (2.83 V/1 m)	87.2dB	89.3dB	91dB
Frequency response	70Hz - 20kHz	70Hz - 20kHz	60Hz - 20kHz
Accessories	Grilles included	Grilles included	Grilles included



570 AC

2-way coaxial kit

5 x 7" (130 x 180 mm)

DFS®
(Dual Fiberglass Structure)

Ferrite

2⁵/₁₆" (59.5mm)

1" (25mm)

Rotating Aluminium
inverted dome

Integrated: 6dB/oct

4Ω

120W

60W RMS

92.8dB

65Hz - 20kHz

Without grille

690 AC

2-way coaxial kit

6 x 9" (164 x 235mm)

DFS®
(Dual Fiberglass Structure)

Ferrite

1³/₁₆" (30mm)

1³/₁₆" (30mm)

Rotating Aluminium
inverted dome

Integrated: 6dB/oct

4Ω

150W

75W RMS

91.3dB

50Hz - 20kHz

Grilles included



130 AS

165 AS

165 AS3

Type	2-way component kit	2-way component kit	3-way component kit
Diameter	5" (130mm)	6½" (165mm)	Woofer : 6½" (165mm) Midrange : 3⅛" (80mm)
Cone	DFS® (Dual Fiberglass Structure)	DFS® (Dual Fiberglass Structure)	DFS® (Dual Fiberglass Structure)
Motor	Ferrite	Ferrite	Ferrite
Mounting depth	2⅞" (54.7mm)	2½" (62.9mm)	Woofer : 2½" (62.9mm) Midrange : 1⅞" (42.5mm)
Voice coil diameter	1" (25mm)	1" (25mm)	1" (25mm)
Tweeter	Aluminium inverted dome	Aluminium inverted dome	Aluminium inverted dome
Crossover	Separated: 12/12dB/oct (5kHz)	Separated: 12/12dB/oct (5kHz)	Separated: 6/12dB/oct (5kHz)
Adjustable tweeter level	+3; 0; -3dB/oct	+3; 0; -3dB/oct	+3; 0; -3dB/oct
Impedance	4Ω	4Ω	4Ω
Max. power	100W	120W	160W
Nom. power	50W RMS	60W RMS	80W RMS
Sensitivity (2.83 V/1 m)	90dB	91.3dB	90dB
Frequency response	65Hz - 20kHz	60Hz - 20kHz	55Hz - 20kHz
Suggested load volume	-	-	-
Accessories	Grilles included	Grilles included	Grilles included



25 A4

Subwoofer

10" (250mm)

DFS®
(Dual Fiberglass Structure)

4¾" (120mm)

5" (126.6mm)

Simple voice coil: 2" (50mm)

-

-

-

4Ω

400W

200W RMS

85dB

36Hz - 500Hz

Sealed enclosure: 0.52 to 0.88 cu ft
Bass-reflex: 0.71 to 1.23 cu ft

-

30 A4

Subwoofer

12" (300mm)

DFS®
(Dual Fiberglass Structure)

4¾" (120mm)

5¾" (146.5mm)

Simple voice coil: 2" (50mm)

-

-

-

4Ω

500W

250W RMS

87dB

32Hz - 500Hz

Sealed enclosure: 0.71 to 1.06 cu ft
Bass-reflex: 0.88 to 1.23 cu ft

-

08.

UNIVERSAL

Optimal compatibility

Enjoy the Universal line's rich sound without altering the aesthetics of your car. Special attention was paid to design and dimensions during the development stages of these products, to ensure optimal compatibility with as many different vehicles as possible. Their compactness, shallow depth and divisible fastenings make them quick and easy to fit.





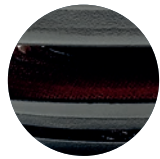
Adjustable
tweeter level



Polyglass cone



Butyl
surround



Integrated
crossover



Al/Mg
tweeter



Compact
size





ICU 100

ICU 130

ICU 165

	ICU 100	ICU 130	ICU 165
Type	2-way coaxial kit	2-way coaxial kit	2-way coaxial kit
Diameter	4" (100mm)	5" (130mm)	6½" (165mm)
Cone	Polyglass	Polyglass	Polyglass
Motor	Ferrite	Ferrite	Ferrite
Mounting depth	1⅞" (49mm)	1⅞" (48.9mm)	1⅞" (48.4mm)
Voice coil diameter	1" (25mm)	1" (25mm)	1" (25mm)
Tweeter	Al/Mg inverted dome	Al/Mg inverted dome	Al/Mg inverted dome
Crossover	Integrated: 6dB/oct	Integrated: 6dB/oct	Integrated: 6dB/oct
Adjustable tweeter level	Flat / High	Flat / High	Flat / High
Impedance	4Ω	4Ω	4Ω
Max. power	80W	120W	140W
Nom. power	40W RMS	60W RMS	70W RMS
Sensitivity (2.83 V/1 m)	90.3dB	91.8dB	93dB
Frequency response	90Hz - 21kHz	90Hz - 21kHz	60Hz - 21kHz
Accessories	Without grille	Without grille	Without grille



ICU 570

ICU 690

2-way coaxial kit	2-way coaxial kit
5 x 7" (130 x 180mm)	6 x 9" (164 x 235mm)
Polyglass	Polyglass
Ferrite	Ferrite
2 ⁵ / ₁₆ " (59.3mm)	3 ⁵ / ₁₆ " (83.5mm)
1" (25mm)	1" (25mm)
Al/Mg inverted dome	Al/Mg inverted dome
Integrated: 6dB/oct	Integrated: 6dB/oct
Flat / High	Flat / High
4Ω	4Ω
140W	160W
70W RMS	80W RMS
94dB	93.6dB
60Hz - 21kHz	55Hz - 21kHz
Without grille	Without grille



ISU 130

ISU 165

ISU 200

Type	2-way component kit	2-way component kit	2-way component kit
Diameter	5" (130mm)	6½" (165mm)	8" (230mm)
Cone	Polyglass	Polyglass	Polyglass
Motor	Ferrite	Ferrite	Ferrite
Mounting depth	1⅞" (48.9mm)	1⅞" (48.4mm)	2½" (63.5mm)
Voice coil diameter	1" (25mm)	1" (25mm)	1" (25mm)
Tweeter	Al/Mg inverted dome	Al/Mg inverted dome	Al/Mg inverted dome
Crossover	Integrated (connectors): 6dB/oct	Integrated (connectors): 6dB/oct	Integrated (connectors): 6dB/oct
Impedance	4Ω	4Ω	4Ω
Max. power	120W	140W	160W
Nom. power	60W RMS	70W RMS	80W RMS
Sensitivity (2.83 V/1 m)	91.8dB	93dB	93dB
Frequency response	90Hz - 21kHz	60Hz - 21kHz	40Hz - 21kHz
Accessories	Tweeter support Crossovers in line on connectors Supplied without grille	Tweeter support Crossovers in line on connectors Supplied without grille	Tweeter support Crossovers in line on connectors Supplied without grille



ISU 690

TWU 1.5

2-way component kit	Tweeter
6 x 9" (164 x 235mm)	1 ⁵ / ₁₆ " (49.4mm)
Polyglass	Al/Mg inverted dome
Ferrite	Neodymium
3 ⁵ / ₁₆ " (83.5mm)	1 ¹ / ₁₆ " (16.8mm)
1" (25mm)	1 ³ / ₁₆ " (20mm)
Al/Mg inverted dome	-
Integrated (connectors): 6dB/oct	Integrated: 6dB/oct
4Ω	4Ω
160W	100W
80W RMS	15W RMS
93,6dB	94dB
55Hz - 21kHz	4kHz - 21kHz
Tweeter support Crossovers in line on connectors Supplied without grille	4 possibilities: "Flush", surface, tilted mounting, in factory location

09.

AUDITOR

Your Focal installation debut

With Auditor, treat yourself to a high-quality Focal audio system at a very competitive price. This range of nine versatile kits provides a system with guaranteed efficiency, performance and power. Combined with dedicated electronics or connected to the vehicle's original amplifier, these component, coaxial and elliptical coaxial kits significantly improve the on-board audio. These products benefit from all of Focal's expertise to help you rediscover the pleasure of driving to music!

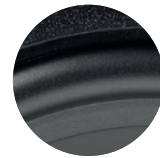




Polypropylene
cone



Mylar Inverted
dome tweeter



'U'-shaped
surround



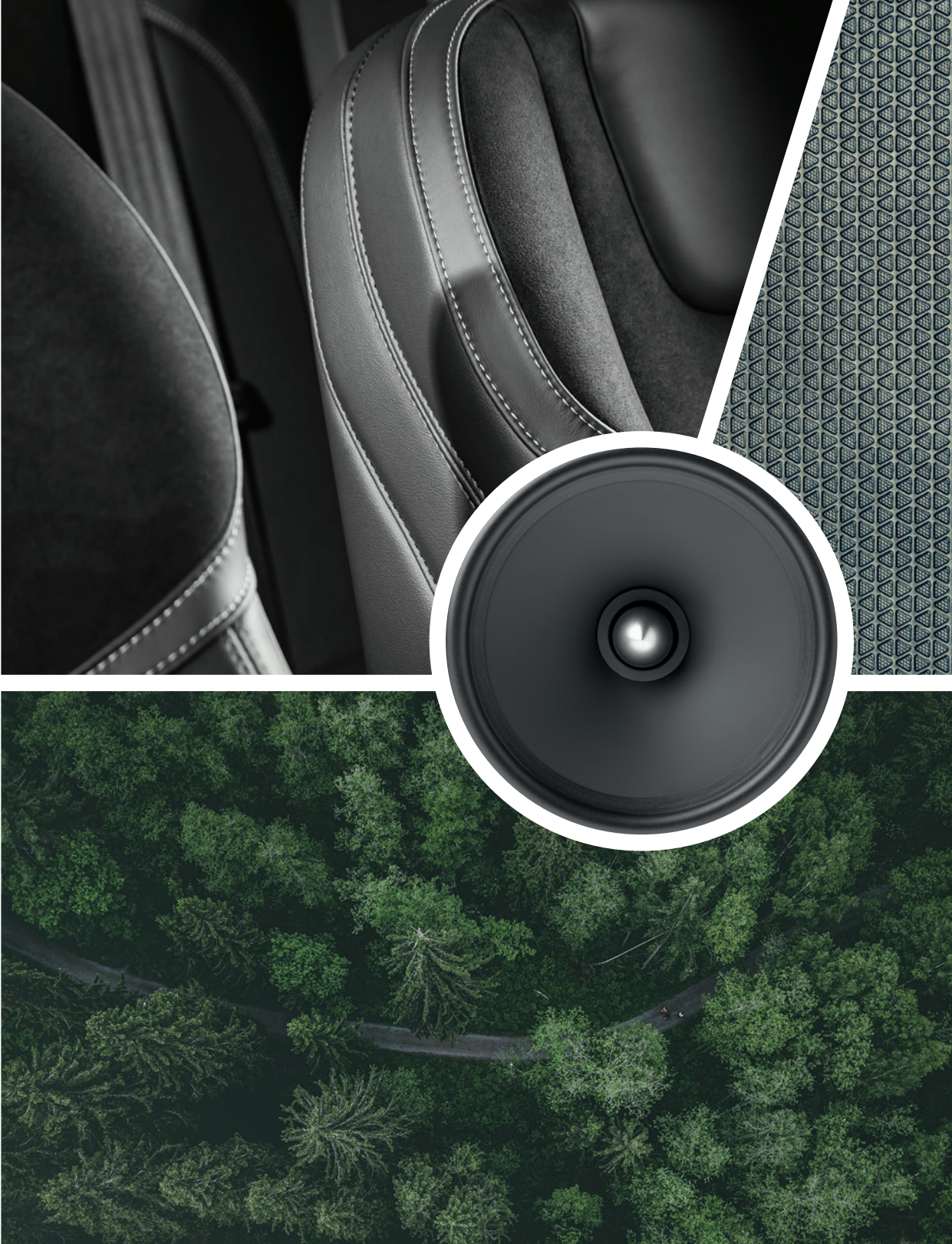
Steel
bowl



Black lacquered
tweeter finish



ABS & Mesh
grille





ACX 100



ACX 130



ACX 165

	ACX 100	ACX 130	ACX 165
Type	2-way coaxial kit	2-way coaxial kit	2-way coaxial kit
Diameter	4" (100mm)	5" (130mm)	6½" (165mm)
Cone	Polypropylene	Polypropylene	Polypropylene
Motor	Ferrite	Ferrite	Ferrite
Mounting depth	1⅞" (48.2mm)	2⅛" (55mm)	2⅞" (62.5mm)
Voice coil diameter	1" (25mm)	1" (25mm)	1" (25mm)
Tweeter	Inverted dome	Inverted dome	Inverted dome
Crossover	6dB/oct	6dB/oct	6dB/oct
Impedance	4Ω	4Ω	4Ω
Max. power	60W	100W	120W
Nom. power	30W RMS	50W RMS	60W RMS
Sensitivity (2.83 V/1 m)	88dB	90dB	91.5dB
Frequency response	80Hz - 21kHz	65Hz - 21kHz	60Hz - 21kHz
Accessories	Supplied with grilles, fastening and screws	Supplied with grilles, fastening and screws	Supplied with grilles, fastening and screws



ACX 165 S

ACX 570

ACX 690

2-way shallow coaxial kit

2-way coaxial elliptic kit

3-way coaxial elliptic kit

6½" (165mm)

5 x 7" (130 x 180mm)

6 x 9" (164 x 235mm)

Polypropylene

Polypropylene

Polypropylene

Ferrite

Ferrite

Ferrite

1⅞" (48.5mm)

2⅜" (59.5mm)

3¼" (78mm)

1" (25mm)

1" (25mm)

1⅜" (35mm)

Inverted dome

Inverted dome

Inverted dome
tweeter/midrange

6dB/oct

6dB/oct

6dB/oct

4Ω

4Ω

4Ω

110W

120W

160W

55W RMS

60W RMS

80W RMS

91dB

91.6dB

92dB

60Hz - 21kHz

60Hz - 21kHz

50Hz - 20kHz

Supplied with grilles,
fastening and screws

Supplied with grilles,
fastening and screws

Supplied with grilles,
fastening and screws



ASE 130

ASE 165

Type	2-way component kit	2-way component kit
Diameter	5" (130mm)	6½" (165mm)
Cone	Polypropylene	Polypropylene
Motor	Ferrite	Ferrite
Mounting depth	2½" (55.5mm)	2¾" (62.5mm)
Voice coil diameter	1" (25mm)	1" (25mm)
Tweeter	Inverted dome	Inverted dome
Crossover	Separated pre-wired: 12dB/oct	Separated pre-wired: 12dB/oct
Impedance	4Ω	4Ω
Max. power	100W	120W
Nom. power	50W RMS	60W RMS
Sensitivity (2.83 V/1 m)	90dB	91.5dB
Frequency response	65Hz - 21kHz	60Hz - 21kHz
Accessories	Supplied with grilles, fastening and screws	Supplied with grilles, blinding and screws



ASE 165 S

2-way shallow component kit

6½" (165mm)

Polypropylene

Ferrite

1⅞" (48.5mm)

1" (25mm)

Inverted dome

Separated pre-wired:
12dB/oct

4Ω

110W

55W RMS

91dB

60Hz - 21kHz

Supplied with grilles,
blinding and screws



AP 4340

Type

Class AB Amplifier
4/3/2 channels
RCA inputs

CEA Power (4Ω)

4 x 70W RMS

Max. power (2Ω)

4 x 95W RMS

Max. power (bridged 4Ω)

2 x 190W RMS

Crossovers

High-Pass (channel 1-2):
60Hz - 1.2kHz
High-Pass (channel 3-4):
100Hz-2.2kHz
Low-Pass : 50 - 250Hz

Functions

Full Range

Dimensions (DxWxH)

13⅜ x 2 x 9¼"
(340 x 50 x 235mm)

10.

SUBWOOFERS

For powerful, boosted bass, choose Focal's range of subwoofers (passive, active, bass-reflex, slim...). They meet all installation requirements thanks to their performance, the range of different sizes available and how compact they are. Compatible with all of our Car Audio products, these subwoofers enjoys all the knowledge and savoir-faire that Focal provides to bring you ultimate listening pleasure in the car.





SUB 10



SUB 10 DUAL



SUB 10 SLIM

Type	Bass-reflex subwoofer	Bass-reflex subwoofer	Subwoofer
Diameter	10" (25cm)	10" (25cm)	10" (25cm)
Cone	Polypropylene	Polypropylene	Polypropylene
Motor	Ferrite	Ferrite	Ferrite
Surround technology	Butyl	Butyl	Butyl
Voice coil diameter	2" (50mm)	2" (50mm)	1" (20mm)
Impedance	4Ω	4Ω + 4Ω	4Ω
Max. power	500W	500W	460W
Nom. power	250W RMS	250W RMS	230W RMS
Sensitivity (2.83 V/1 m)	85dB	85dB	85dB
Frequency response	35Hz - 500kHz	32Hz - 500kHz	39Hz - 500kHz
Suggested load volume	Sealed enclosure : 0.35 to 0.88 cu ft Bass-reflex : 0.88 to 1.23 cu ft	Sealed enclosure : 0.35 to 0.88 cu ft Bass-reflex : 0.88 to 1.41 cu ft	Sealed enclosure : 0.35 to 0.88 cu ft



SUB 12

Bass-reflex subwoofer

12" (30cm)

Polypropylene

Ferrite

Butyl

2" (50mm)

4Ω

600W

300W RMS

88dB

30Hz - 500kHz

Sealed enclosure :
0.53 to 1.06
Bass-reflex :
1.06 to 1.23 cu ft

SUB 12 DUAL

Bass-reflex subwoofer

12" (30cm)

Polypropylene

Ferrite

Butyl

2" (50mm)

4Ω + 4Ω

600W

300W RMS

88dB

29Hz - 50kHz

Sealed enclosure :
0.53 to 1.06 cu ft
Bass-reflex :
1.06 to 1.23 cu ft

SUB 12 SLIM

Subwoofer

12" (30cm)

Polypropylene

Ferrite

Butyl

1" (20mm)

4Ω

560W

280W RMS

87dB

35Hz - 500kHz

Sealed enclosure :
0.53 to 1.06 cu ft



BOMBA BP 20

IBUS 2.0

IBUS 2.1

Type	Compact active subwoofer enclosure Class D amplifier High and low level audio input (OEM and aftermarket head units compatibility)	Active enclosure with subwoofer	Active enclosure with subwoofer True 2.1 system 1 amplifier for the subwoofer 1 amplifier for the front channel very high power
Woofer diameter	8" (200mm)	8" (200mm)	8" (200mm)
Impedance	-	-	-
Sub max. power	300W	150W	150W
Sub nom. power	150W RMS	75W RMS	75W RMS
Sensitivity (2.83V/1m)	-	-	-
Frequency response	20Hz - 125Hz	45Hz - 150Hz	45Hz - 150Hz
Speaker max. power	-	-	2 x 110W RMS
Speaker nom. power	-	-	2 x 55W RMS
Function	Bandpass technology Phase selector : 0 - 180° Adjustable frequency cut off : 45Hz - 120Hz	High-level inputs Autopower ON	High-level inputs Autopower ON Amplification 2 front channels
Accessories	-	Remote & <i>Plug & Play</i> wiring	Remote & <i>Plug & Play</i> wiring
Weight	24.4lbs (11kg)	11.1lbs (5kg)	11.3lbs (5.1kg)
Dimensions (HxIxP)	17 ⁵ / ₁₆ x 9 ¹³ / ₁₆ x 12 ¹¹ / ₁₆ " (249 x 439 x 323mm)	2 ¹³ / ₁₆ x 13 ⁹ / ₁₆ x 9 ¹³ / ₁₆ " (71.5 x 344 x 250mm)	2 ¹³ / ₁₆ x 13 ⁹ / ₁₆ x 9 ¹³ / ₁₆ " (71.5 x 344 x 250mm)



PSB 200

ISUB TWIN

Compact passive
subwoofer enclosure

Underseat passive
subwoofers

8" (200mm)

-

4Ω

2Ω

250W

2 x 200W

150W RMS

2 x 100W RMS

83dB

83dB

45Hz - 150Hz

50 - 150Hz

-

-

-

-

-

-

Screws, fixation system

Fixation system

15.7lbs (7kg)

2 x 6lbs (2 x 2.7kg)

19¼ x 4⅝ x 12"
(109 x 489 x 304mm)

10¼ x 9½ x 3⅝"
(260 x 240 x 80mm)

11.

AMPLIFIERS & ACCESSORIES

In combination with and as a complement to our installations, we offer a range of amplifiers and cables so you can enjoy an all-round solution. Focal electronics To experience the sensations of a precise, controlled and stable sound, have it all. Last but not least, our cables play a vital role in the audio architecture, answering all your amplification questions and optimising the connections between components.





FPX 5.1200

FPX 4.400 SQ

FPX 4.800

Type	Premium Class D Amplifier 5 channels	Premium Class AB Amplifier 4/3/2 channels Sound Quality	Premium Class D Amplifier 4/3/2 channels
CEA Power (4Ω)	4 x 75W RMS + 1 x 420W RMS	4 x 70W RMS	4 x 120W RMS
Max. power (2Ω)	4 x 120W RMS + 1 x 720W RMS	4 x 100W RMS	4 x 185W RMS
Max. power (1Ω)	-	-	-
Max. power (bridged 4Ω)	2 x 240W RMS + 720W RMS	2 x 200W RMS	2 x 370W RMS
Crossovers	Configurable High-Pass / Low-Pass: 50Hz - 500Hz	Configurable High-Pass / Low-Pass: 50Hz - 5 000Hz	Configurable High-Pass / Low-Pass: 50Hz - 500Hz
Copy mode	6CH/4CH/2CH	4CH/2CH	4CH/2CH
Functions	Full range Mode Bass Boost Subsonic filter	Full Range	Full Range
Phase adjustment	Yes	-	-
Protections	Short circuit / Over-current / Reverse polarity / DC / Voltage drop / Heat protection	Short circuit / Over-current / Reverse polarity / DC / Voltage drop / Heat protection	Short circuit / Over-current / Reverse polarity / DC / Voltage drop / Heat protection
Accessories	Remote control, screws, fuses	Screws, fuses, terminal board tools	Screws, fuses, terminal board tools
Weight	9lbs (4.1kg)	8.2lbs (3.7kg)	4.4lbs (2kg)
Dimensions (DxWxH)	11 ³ / ₁₆ x 6 ⁷ / ₈ x 2 ¹ / ₄ " (300 x 175 x 57mm)	12 ³ / ₈ x 6 ⁷ / ₈ x 2 ¹ / ₄ " (314 x 175 x 57mm)	9 ⁵ / ₁₆ x 5 ³ / ₁₆ x 2 ¹ / ₁₆ " (237 x 132 x 53mm)



FPX 1.1000

Premium Class D Amplifier
Mono

1 x 420W RMS

1 x 700W RMS

1 x 1000W RMS

-

Configurable Low-Pass:
50Hz - 250Hz

-

Bass Boost (6/12dB)
Crossover subsonic
(10Hz - 50Hz)

Progressive

Short circuit / Over-current /
Reverse polarity /
DC / Voltage drop /
Heat protection

Remote control, screws,
fuses, terminal board tools

5.6lbs (2.55kg)

11¹/₁₆ x 5³/₁₆ x 2¹/₁₆"
(297 x 132 x 53mm)

FDS 4.350

Class D Amplifier
4/3/2 channels

4 x 58W RMS

4 x 100W RMS

-

2 x 200W RMS

Configurable
High-Pass / Low-Pass:
40Hz - 400Hz

-

Full Range

-

Short circuit / Over-current /
Reverse polarity /
DC / Voltage drop /
Heat protection

Screws, fuses

1.9lbs (850g)

7¹³/₁₆ x 4¹/₄ x 1¹/₁₆"
(199 x 108 x 43mm)

FDS 1.350

Class D Amplifier
Mono - RCA low-level inputs

1 x 210W RMS

1 x 350W RMS

-

-

Low-Pass:
40Hz - 400Hz

-

Bass Boost
(0/6dB / 12dB)

Progressive (0 - 180°)

Short circuit / Over-current /
Reverse polarity /
DC / Voltage drop /
Heat protection

Screws, fuses

1.9lbs (850g)

7¹³/₁₆ x 4¹/₄ x 1¹/₁₆"
(199 x 108 x 43mm)



FDP 1.900 V2

FDP 4.600 V2

FDP 6.900 V2

Type	Premium Mono Class D Amplifier	Premium 4-Channel Class D Amplifier	Premium 6-Channel Class D Amplifier
Power (4Ω)	1 x 500W RMS	4 x 150W RMS	6 x 150W RMS
Power (2Ω)	1 x 850W RMS	4 x 200W RMS	6 x 200W RMS
Power (bridged 4Ω)	1 x 500W RMS into 1ohm	2 x 400W RMS	2 x 400W RMS + 1 x 500W RMS
Crossovers	High Pass 10-48Hz Low Pass 40-350Hz	High Pass/Low Pass/Band Pass 50Hz - 4000Hz	High Pass/Low Pass/Band Pass 50Hz - 4000Hz
Copy mode	-	4CH / 2CH	6CH / 4CH / 2CH
Functions	Bass Boost 40Hz 0 to +6dB	Full Range HP / LP / BP	Full Range HP / LP / BP
Phase adjustment	Yes	-	-
Protections	Short circuit / Over-current / Reverse polarity / DC / Voltage drop / Heat protection	Short circuit / Over-current / Reverse polarity / DC / Voltage drop / Heat protection	Short circuit / Over-current / Reverse polarity / DC / Voltage drop / Heat protection
Accessories	Sub Level Remote, Mount Screws, Mount Brackets	Sub Level Remote, Mount Screws, Mount Brackets	Sub Level Remote, Mount Screws, Mount Brackets
Weight	6lbs (2.72kg)	6lbs (2.72kg)	8lbs (3.6kg)
Dimensions (DxWxH)	7¾ x 10 x 2" (196 x 254 x 50mm)	7¾ x 10 x 2" (196 x 254 x 50mm)	7¾ x 14¾ x 2" (196 x 364 x 50mm)



FDP SPORT V2

FDP 1.2000

Motorcycle & All-Terrain 4-Channel Full Range Class D Amplifier	Premium Mono Class D Subwoofer Amplifier
4 x 150W RMS	1 x 1200W RMS
4 x 200W RMS	1 x 2000W RMS
2 x 400W RMS	-
High Pass 10Hz - 150Hz Low Pass 45Hz - 150Hz	High Pass 8-53Hz Low Pass 40-350Hz
-	-
-	Sub Harmonic Synthesizer
-	Yes
Short circuit / Over-current / Reverse polarity / DC / Voltage drop / Heat protection	Short circuit / Over-current / Reverse polarity / DC / Voltage drop / Heat protection
Wires, Harley Molex Harnesses, Mount Screws	Sub Level Remote, Mount Screws, Mount Brackets
3lb (1.4kg)	12lbs (5.44kg)
8¼ x 5 x 1½" (208 x 127 x 41mm)	7¾ x 19 x 2" (196 x 482 x 50mm)



FSP-8

Type	8-channel sound processor
Inputs	Selectable high/low-level inputs for compatibility with factory or after-market head units
	High-resolution digital input (24 bits/192kHz)
	Auxiliary stereo input
Max output (with 10 kΩ)	3.4V
Frequency response	Digital crossover OFF/-3 dB: 5Hz - 21kHz
Signal/Noise ratio	-90dBA (analog input) -99dBA (optical)
Distortion - 10 kΩ - @ 1kHz (with 22kHz Low-Pass filter)	0.02 %
Accessoires	Remote control with LED screen (sold separately)
Dimensions (DxHxW)	5 ⁵ / ₁₆ "x8 ⁹ / ₁₆ "x1 ⁷ / ₈ " (135 x 218 x 48mm)



FSP-8 REMOTE CONTROL

Enables you to control the main functions of the FSP-8: Adjust overall gain, subwoofer volume, and input selection for the FSP-8 Reminds you of the stored pre-sets Notched knob LED backlit screen



B.A.M XXXL

1 roll of 19¹/₁₆ x 236¹/₄"
(50 x 600cm) (3m²)

B.A.M XL

1 sheet 19¹/₁₆ x 78³/₄"
(50x200cm) (1m²)



IMPULSE 4.320

Type	Class D ultra-compact Amplifier - 4/3/2 channels
CEA power (4Ω)	4 x 55W RMS
Max. power (2Ω)	4 x 80W RMS
Max. power (4Ω bridged)	2 x 160W RMS
Crossovers	Activable/deactivable fixed at 75Hz on channels 1/2 Configurable from 40Hz-200Hz on channels 3/4
Copy Mode	4 CH/2CH
Setting	Adjustable phase on channels 3/4
Protections	Short circuit / Over-current / Reverse polarity / DC / Voltage drop / Heat protection
Weight	1.2lbs (550g)
Dimensions (LxHxD)	6 ⁷ / ₈ x 1 ¹ / ₈ x 2 ⁵ / ₈ " (175 x 47 x 66.5mm)



IY - AC IMPULSE 4.320

Adapter Y cable
Focal Impulse 4.320



HILO V3

Type	High-level to RCA line stereo converter
Function	Converts a stereo amplified signal in two low-level line outputs for an amplifier DC and AC detection modes Automatic remote output Speaker simulation network to avoid head-unit muting
Bandwith (+/-1dB)	10Hz - 140kHz
Signal/Noise ratio	100dB
Distorsion	< 0.01 %

For more information, find us at:

www.focal-america.com



ORCA
DESIGN & MANUFACTURING CORP.

804 CALLE PLANO; CAMARILLO, CA 93012 USA
TEL: 1.805.484.4355 | FAX: 1.805.484.9008
EMAIL: INFO@ORCADESIGN.COM | WWW.ORCADESIGN.COM